

QUARTER  
HORSE  
ASSOCIATION  
LUXEMBOURG



**PATTERN**  
**BEGINNER SHOW**  
April 9<sup>th</sup> & 10<sup>th</sup> 2016

Ecuries Hoffmann · 6, um Tunnel · L-3552 Dudelange

**FIRST SHOW IN WRAL-CIRCUIT 2016**

★ **PREPARATION DAY** ★

Saturday, April 9<sup>th</sup>

★ **BEGINNER SHOW** ★

Sunday, April 10<sup>th</sup>

★ **WRAL/FLSE Show - all breed !!** ★

Food & drinks · Western store



special thanks to our sponsors:



Rénovation de votre salle de bains de A-Z



5, rue Kalchesbruck L-1852 Luxembourg  
Tel.: 436761 Fax: 436902 maroldt@pt.lu

Matériaux de construction - Carrelages - Sanitaires

ouvert: Lu - Fr 8.00 h - 12.00 h et 13.00 h - 18.00 h Sa 8.00 h - 12.30 h

## Absolute Beginner Show on April 10, 2016

!! CLASSES START AT 9:30am !!

6	WRAL	1202	SHOWMANSHIP AT HALTER	BEGINNER
7	WRAL	1201	SHOWMANSHIP AT HALTER	AMATEUR

Break 15 minutes

8	WRAL	3822	TRAIL IN HAND (all ages )	BEGINNER
---	------	------	---------------------------	----------

Break 10 minutes

9	WRAL	3823	Horse&Dog Trail	BEGINNER
10	WRAL	3812	TRAIL WALK-TROT	BEGINNER
11	WRAL	3802	TRAIL	BEGINNER
12	WRAL	3801	TRAIL	AMATEUR
13	FLSE/WRAL	380	TRAIL	OPEN
14	FLSE/WRAL	3804	TRAIL	YOUTH
15	WRAL	1812	RANCH TRAIL	BEGINNER
16	WRAL	1811	RANCH TRAIL	AMATEUR
17	WRAL	2405	HORSEMANSHIP WALK-TROT	BEGINNER
18	WRAL	4214	WESTERN PLEASURE WALK-TROT	YOUTH
19	WRAL	4302	RANCH RIDING	BEGINNER
20	WRAL	4301	RANCH RIDING	AMATEUR

Lunch Break

21	WRAL	111	LEAD-LINE	YOUTH
22	WRAL	4205	WESTERN PLEASURE WALK-TROT	BEGINNER
23	WRAL	2402	WESTERN HORSEMANSHIP	BEGINNER
24	WRAL	2401	WESTERN HORSEMANSHIP	AMATEUR
25	WRAL	4202	WESTERN PLEASURE	BEGINNER
26	WRAL	4201	WESTERN PLEASURE	AMATEUR
27	FLSE/WRAL	420	WESTERN PLEASURE AA.	OPEN
28	FLSE/WRAL	4204	WESTERN PLEASURE	YOUTH

Break 10 minutes

29	WRAL	3402	REINING AA.	BEGINNER
30	WRAL	3401	REINING AA.	AMATEUR
31	FLSE/WRAL	3404	REINING	YOUTH
32	FLSE/WRAL	340	REINING AA.	OPEN

## ORGANISATION

Your competent partners in Luxembourg

QUARTER  
HORSE  
ASSOCIATION  
LUXEMBOURG

Affiliate of the American Quarter Horse Association  
Association sans but lucratif Siegf social Mompach



Association sans but lucratif  
Sieg social Mompach  
Affiliate of the FLSE  
Affiliate of the NRHA  
Affiliate of the NSBA

## SHOW-INFORMATION

### BEGINNER SHOW - April 09-10

First show in WRAL-Circuit 2016

<b>Show Manager:</b>	Marcel Kockelmann
<b>Judge &amp; Clinician:</b>	Rick Lemay
<b>Ringsteward:</b>	Karin Pauly
<b>Show office:</b>	tel. 00352 691 729653
<b>Doorman:</b>	Mike Ries
<b>Parcourschef:</b>	Marco Stors
<b>Vet:</b>	Beate Schoof tel. 621 651616
<b>Emergency:</b>	112
<b>Blacksmith:</b>	information available at the show office

- Show-office is open on Saturday April 9 from 12.00 h to 18.00 h and opens on April 10 at 8:30 h.
- Stage de préparation on Saturday starts at 15:00 h.
- Classes start on Sunday at 9:30 a.m.



*D.G. Rendiel*  
*Western-Store*

## Tack & Showoutfits

Sophienstraße 1  
DE 66557 Illingen-Uchtelfangen  
Telefon: +49 (0) 68 25 - 40 41 239  
Mobil: +49 (0) 163 - 24 55 697  
Fax: +49 (0) 68 25 - 40 41 239  
D.G.Rendiel69@gmx.de

[www.Rendiel-Westernstore.de](http://www.Rendiel-Westernstore.de)

**...und hier vor Ort für Sie da!**



## STAGE DE PRÉPARATION, APRIL 9, 2016

### STARTS AT 15:00 h

The Stage de préparation will be an information clinic on:

- Showoutfit, (hat, shirts, boots, chaps, ....); Tack (bits, bridles, .....
- how to perform in different classes, mistakes, penalties, credits
- work on patterns

This stage will be held by Rick Lemay

### GENERAL RULES AND INFORMATIONS:

#### LATE ENTRIES:

late entries may be accepted 1 hour before class

#### NACHNENNUNGEN:

Nachnennungen möglich bis 1 Stunde vor Beginn der Klasse

#### INSCRIPTIONS TARDIVES:

inscriptions tardives acceptée jusqu'à 1 heure avant classe

#### WRAL Classes: -

**AQHA rules are applied with following exceptions:**

- Youth -18 may also enter the Beginner, Amateur and Open Division. Youth may show twohanded on Snafflebit or Hackamore or onehanded on a Bit even senior horses.
- No stallions are allowed in Youth-Classes

- The Beginner division is reserved exclusively for competitors who have not won more than 3 times that class (Results of WRAL Beginner, WRAL-Amateur and WRAL-Open are added, minimum of 3 entries),
- Beginner may show twohanded on Snafflebit or Hackamore or onehanded on a Bit even senior horses.
- In all WRAL-classes the horse does not need to be owned by the competitor.
- Trail in Hand APHA rules will be applied
- Horse&Dog-Trail EWU rules will be applied (Western- or English-Dress)

#### FLSE classes: (just for FLSE licensed riders):

**AQHA rules are applied with the following exception:**

- In FLSE-Youth and FLSE-Open classes the horse does not need to be owned by the competitor.
- The competitor needs to own an FLSE-Western or FLSE-Competition license,
- The horse does not need to be registered.

Horses and Dogs must be vaccinated and covered by a liability insurance and be free of disease on the showday. Neither the show-management nor the owner of the arena accept any responsibility for accident, loss or damage to persons, horses, dogs and material.

#### Rights on Photos, Videos etc:

- With the signature, each participant agrees that photos and or videos taken on the showground can be published.



**ANC. ETS CLOOS & KRAUS S.À.R.L.**  
**SUCC.: SIEBENALLER ROMAIN & FILS**  
Machines agricoles, industrielles et espaces verts



*Votre partenaire dans l'agriculture*

ZAC Jauschwis L-7759 ROOST +352 85 92 92  
www.clooskraus.lu



BERENDSOHN

www.berendsohn.lu



EXCLUSIVE WERBEARTIKEL & GESCHENKE



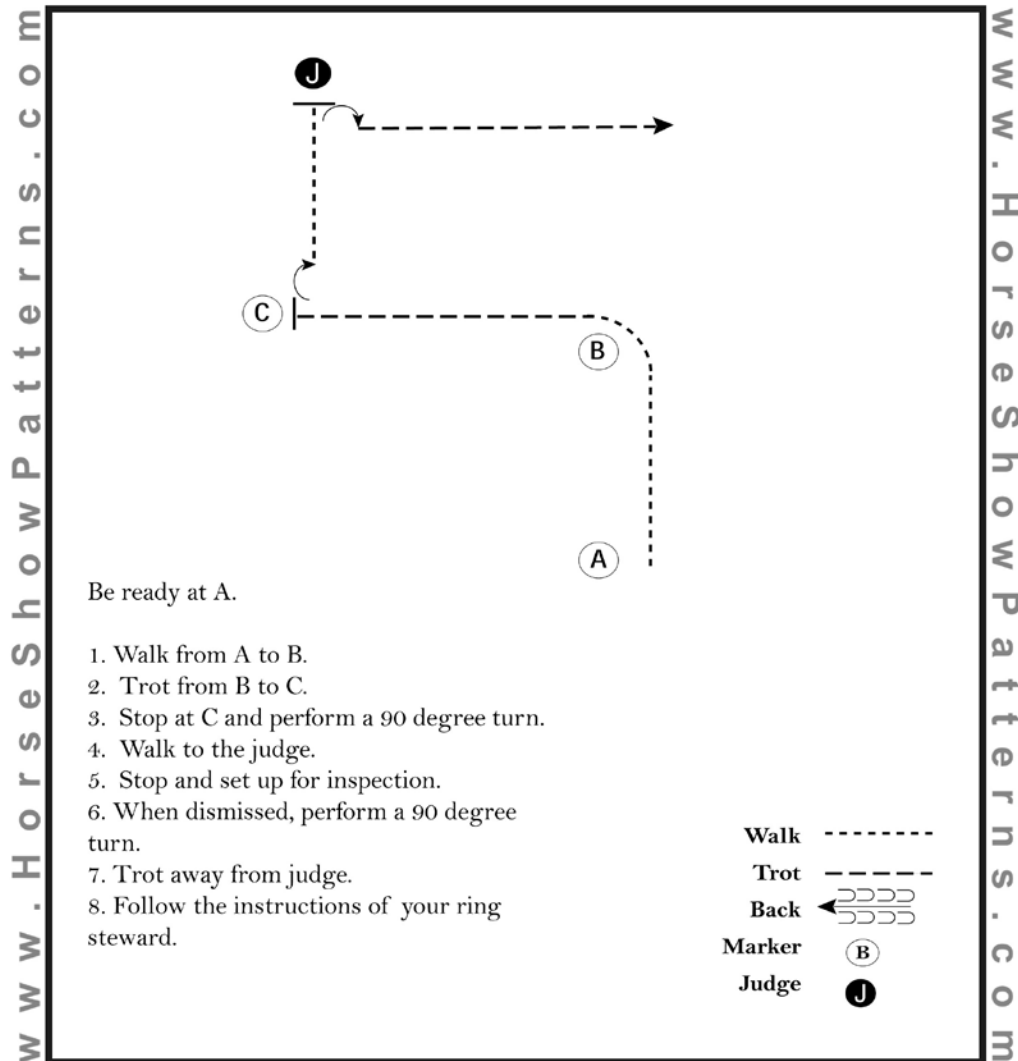
**eQuiaktiv**  
|Osteopathie|Physiotherapie| 

Vanessa Weiler  
www.equi-aktiv.de  
Tel. 0170 - 477 51 54

# WRAL/FLSE BEGINNER SHOW 2016

## 6/ 1202 Showmanship at Halter (Beginner )

Show Date: 04-10-2016



Be ready at A.

1. Walk from A to B.
2. Trot from B to C.
3. Stop at C and perform a 90 degree turn.
4. Walk to the judge.
5. Stop and set up for inspection.
6. When dismissed, perform a 90 degree turn.
7. Trot away from judge.
8. Follow the instructions of your ring steward.

Walk -----  
 Trot - - - - -  
 Back ← wavy arrows  
 Marker (B)  
 Judge (J)

[SWT-17]

Pattern Provided by:

**WRAL**



## FASSADENFEST.

Sie wärmt. Sie zeigt sich von ihrer besten Seite. Sie ist eine wahre Augenweide: Ihre Fassade – aus unseren Händen!

Rufen Sie uns an!

Peinture Phillipps Sàrl

7, rue de Godbrange  
 L-6118 Junglinster  
 Tel.: 00352 / 42 64 95

3, rue de la Déportation  
 L-1415 Luxembourg Hollerich  
 Tel.: 00352 / 42 64 95-40

### FASSADENPROGRAMM.

- Wärmedämm-Verbundsysteme – Planung und Montage
- Fassadenputze
- Fassadensanierung
- Fassadengestaltung

info@phillipps.lu  
 www.phillipps.lu

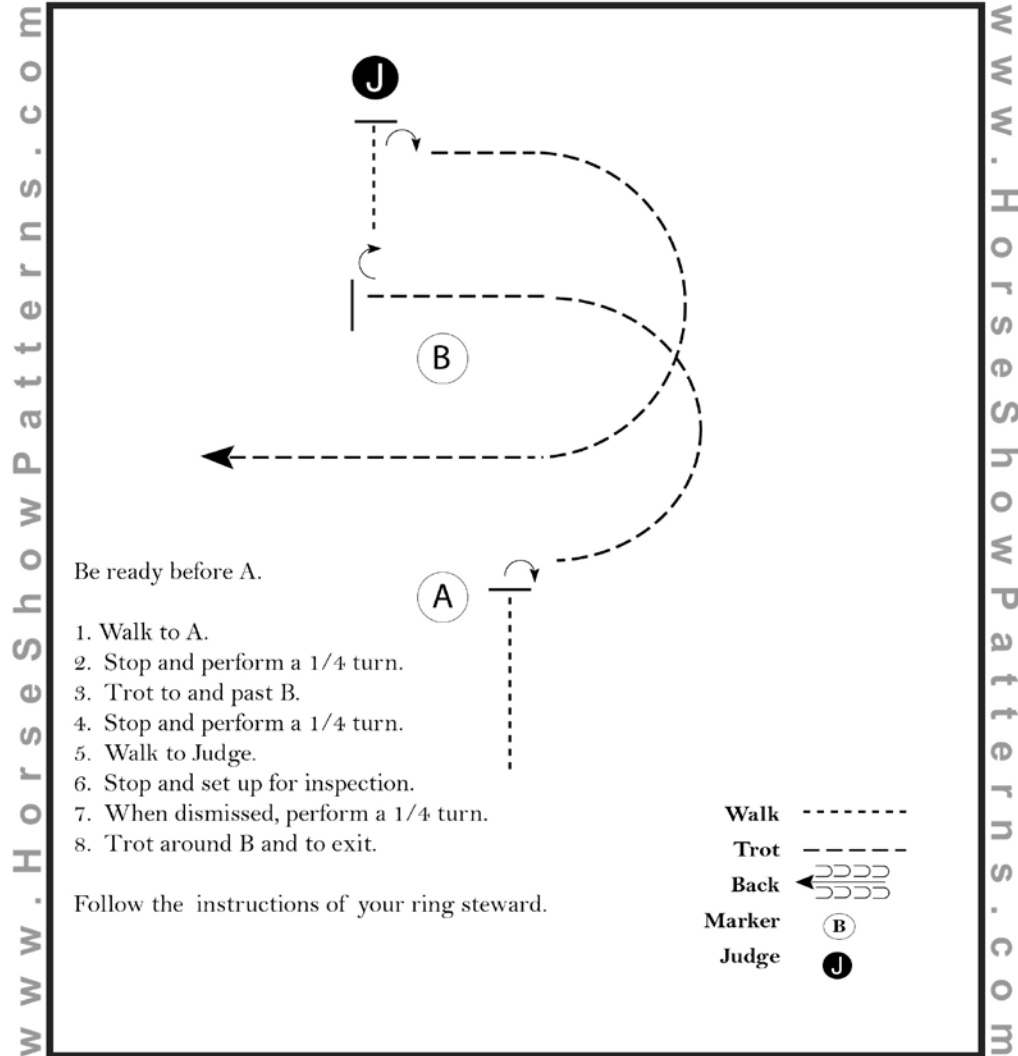




# WRAL/FLSE BEGINNER SHOW 2016

7/ 1201 Showmanship at Halter (Amateur)

Show Date: 04-10-2016



[SWT-85]

Pattern Provided by:

**WRAL**

©2016 HorseShowPatterns.com. All Rights Reserved.



TEAM WMB

Image nach Maß



**KOLLEKTION 2014**

Europa Allee 12 · 54343 Föhren

Tel. +49 (0) 65 02 / 99 65 72

Fax +49 (0) 65 02 / 99 69 430

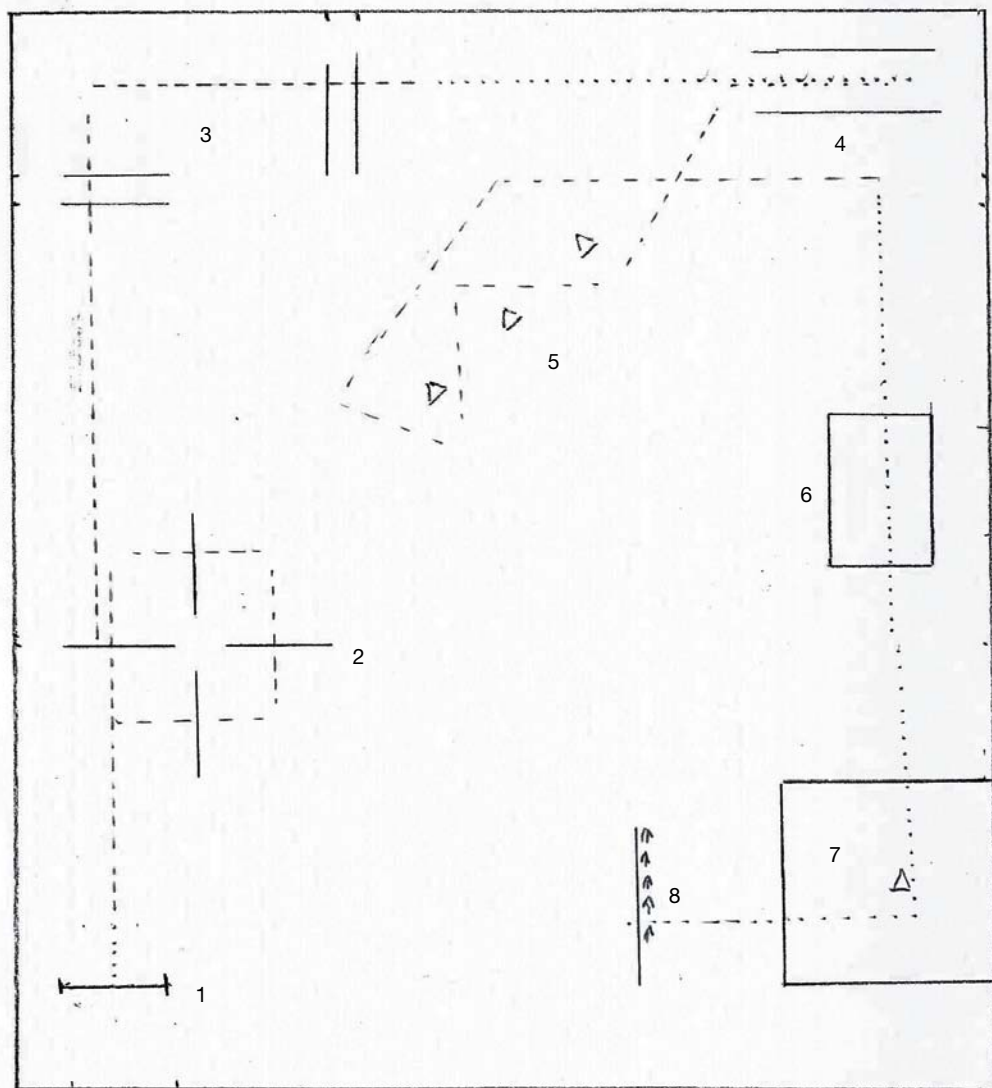
www.team-wmb.de · info@team-wmb.de

Promotion  
Arbeitskleidung  
Businesskleidung  
Stickerei und Druck

08/3822 Trail in Hand

09/3823 Horse & Dog Trail

10/3812 Trail Walk Trot



- 1 Gate
- 2 Jog over poles
- 3 Jog over poles
- 4 Walk in chute + back
- 5 Jog through serpentine
- 6 Walk over bridge
- 7 Walk over pole right
- 8 Side pass over pole right

**Für Horse & Dog Trail - Hund:**

- 1 Tor öffnen Hund durchschicken - Tor schließen
- 2 Pferd + Hund traben über Stangen
- 3 Pferd + Hund traben über Stangen
- 4 Hund ablegen und warten
- 5 Pferd + Hund traben Serpentina
- 6 Hund über Brücke schicken
- 7 Hund vor der Box ablegen
- 8 Hund rufen und anleinen

12 ARELERSTROOSS  
L-8539 HUTTANGE

Join us on Facebook  
TEL - 621173145

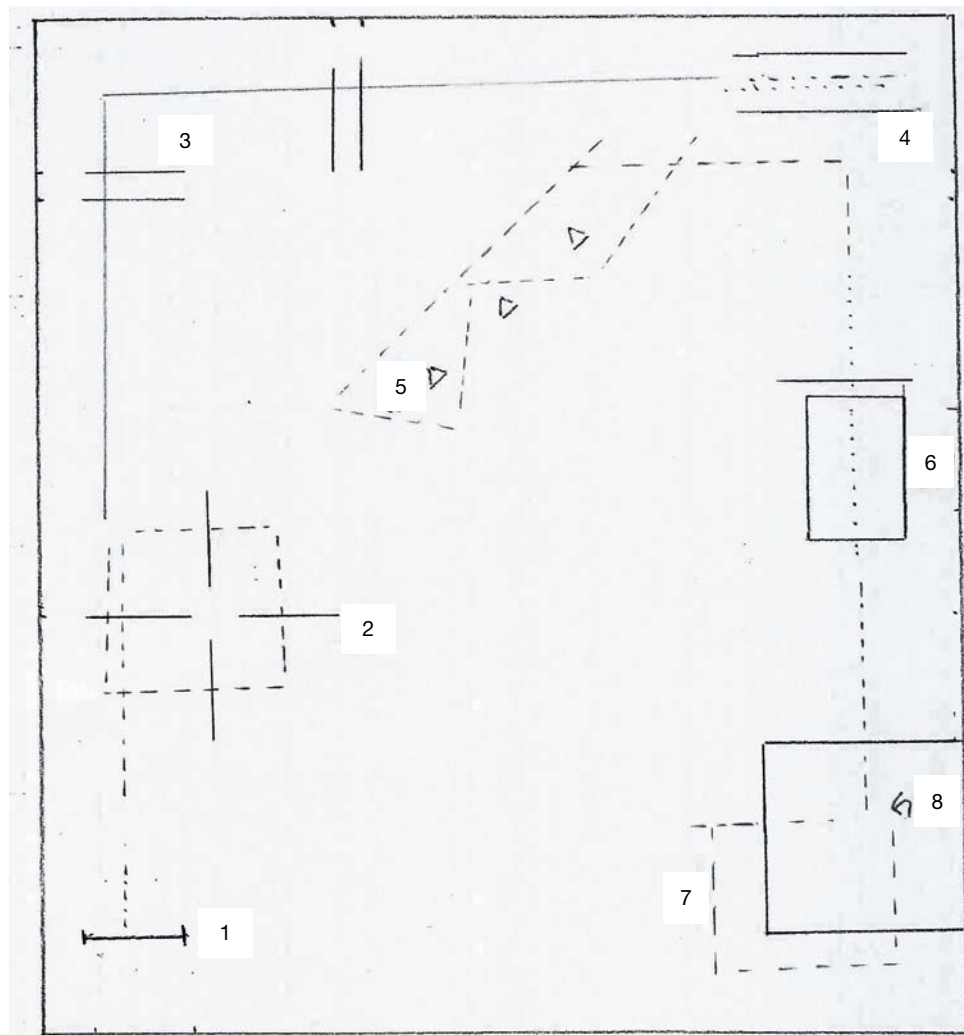
**OAK LEAF SALOON**  
RENTAL SALOON  
FOR YOUR FESTIVITY

**WESTERN STORE**  
SADDLES, TACK, BOOTS, SHIRTS,  
JEANS, HATS AND MORE

**FOUR OAKS HOTEL**  
BED & BREAKFAST

11/3802 Trail Beginner

14/3804 Trail Youth



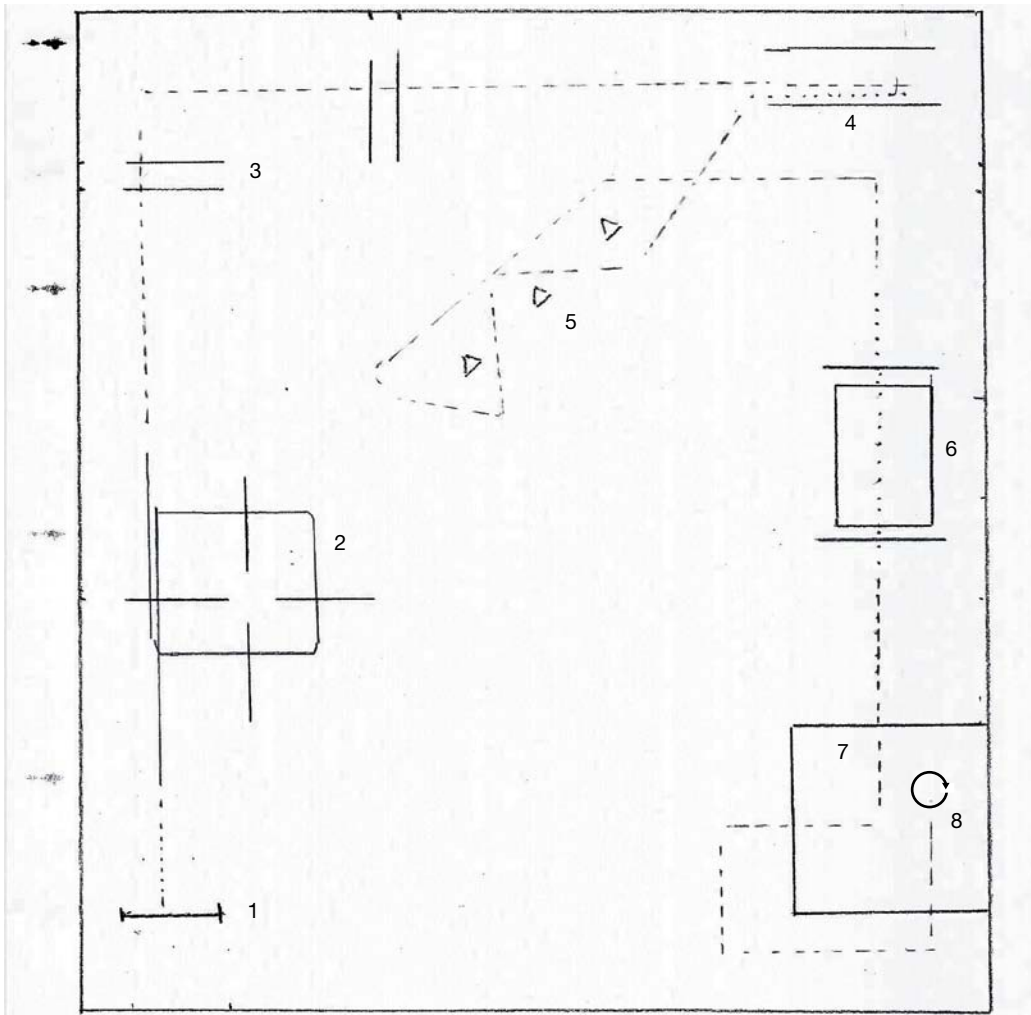
- 1) Gate
- 2) Jog over poles
- 3) Lope over poles
- 4) Walk in chute + back
- 5) Jog through serpentine
- 6) Walk over bridge
- 7) Jog in and through box
- 8) 1/4 turn left, walk out



[WWW.LEOPARDNATURAL.COM](http://WWW.LEOPARDNATURAL.COM)



# 12/3801 Trail Amateur



- 1) Gate
- 2) Lope RL over poles
- 3) Jog over poles
- 4) Jog in chute + back
- 5) Jog through serpentine
- 6) Walk over poles and bridge
- 7) Jog in and through box
- 8) 360° right turn, walk out

Home of



Champions

BREUG, Hauptstr. 30  
66871 Reichweiler  
Tel: 0 63 84 / 14 16 o 78 20



**+0049 1708361251**

NU CHEX TO CASH

NU CASH  
AMARILLA CHEX

WIMPYS  
LITTLE STEP

LEOLITA STEP

FORTY SEVEN  
STEP LITE

*Wimpys Playin Smart*

SMART CHIC OLENA

SMART LITTLE LENA  
GAY SUGAR CHIC

LIPSCHIC

BECKYS PLAYIN

FRECKLES PLAYBOY  
DOC'S BECKS

Effizient und attraktiv – auch im Preis:  
Vitodens 200-W.



Gas-Brennwert-Wandgerät  
mit beispielhaftem Preis-  
Leistungs-Verhältnis:

- Maximale Energieausnutzung auf kleinstem Raum
- Langlebige Inox-Radial-Heizfläche aus Edelstahl
- Besonders für den Einsatz im Geschoss-Wohnungsbau geeignet

**VIESSMANN**

Wir beraten Sie gern:

CHAUFFAGE · SANITAIRE  
*Baumert*



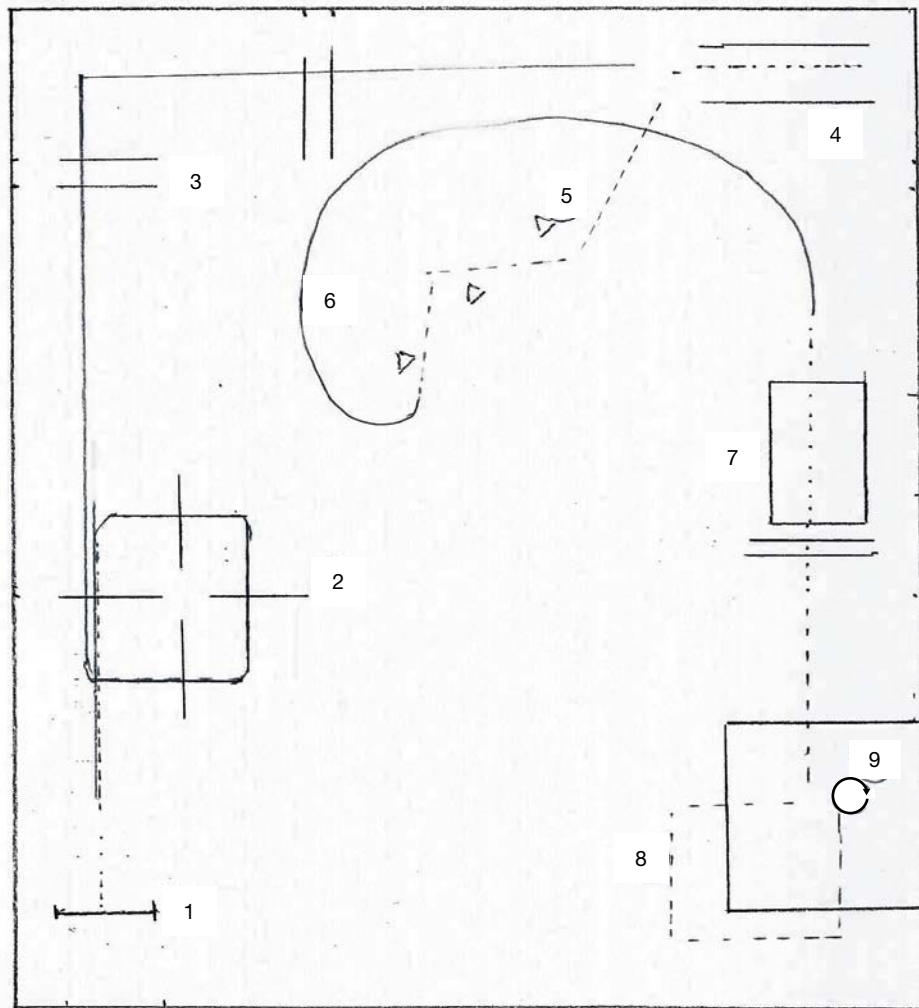
CHAUFFAGE · SANITAIRE  
*Baumert*

WWW.BAUMERT-ENT.LU



**BGL**  
**BNP PARIBAS**

## 13/380 Trail Open



- 1) Gate
- 2) Lope over poles RL
- 3) Lope over poles
- 4) Lope in chute + back
- 5) Jog through serpentine
- 6) RL
- 7) Walk over bridge and poles
- 8) Jog through box
- 8) 360° right turn, walk out



[www.gama.lu](http://www.gama.lu)

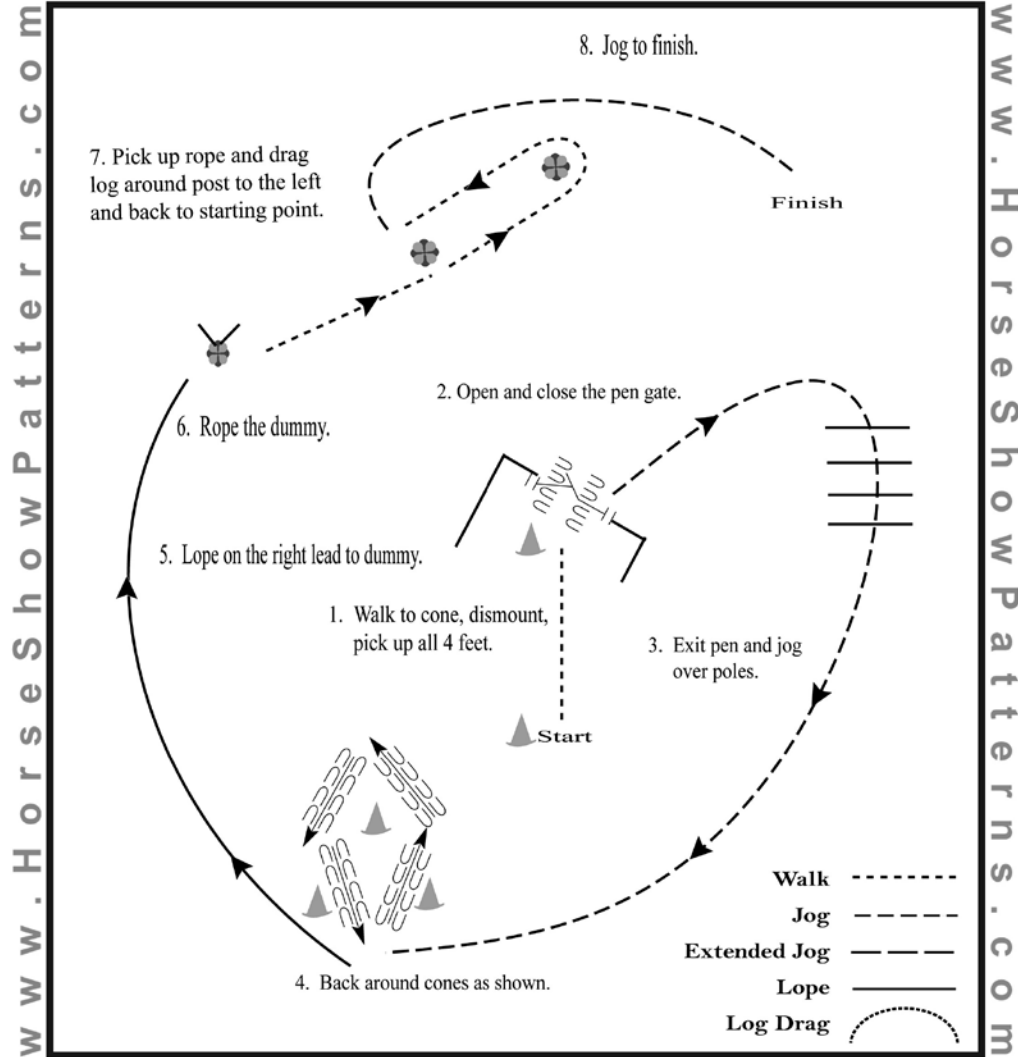


# WRAL/FLSE BEGINNER SHOW 2016

15/ 1812 Ranch Trail (Beginner)

16/ 1811 Ranch Trail (Amateur)

Show Date: 04-10-2016



[RT/2]

Pattern Provided by:

**WRAL**

©2016 HorseShowPatterns.com. All Rights Reserved.



<http://www.trierweiler.lu>

info@trierweiler.lu

Z.I. « Um Mierscherbierg »

7, allée J.W. Leonard

L-7526 MERSCH

Tél. : 32 60 95 dépôt : 32 51 07

Carrelages - Chapes - Pierres Naturelles  
Vente - Pose - Rénovations - Conseils

**EXPOSITION**

## Garage Roby Cruciani

73, route de Luxembourg

L-3515 Dudelange

Tél.: 52 02 52-1 Fax: 52 02 42



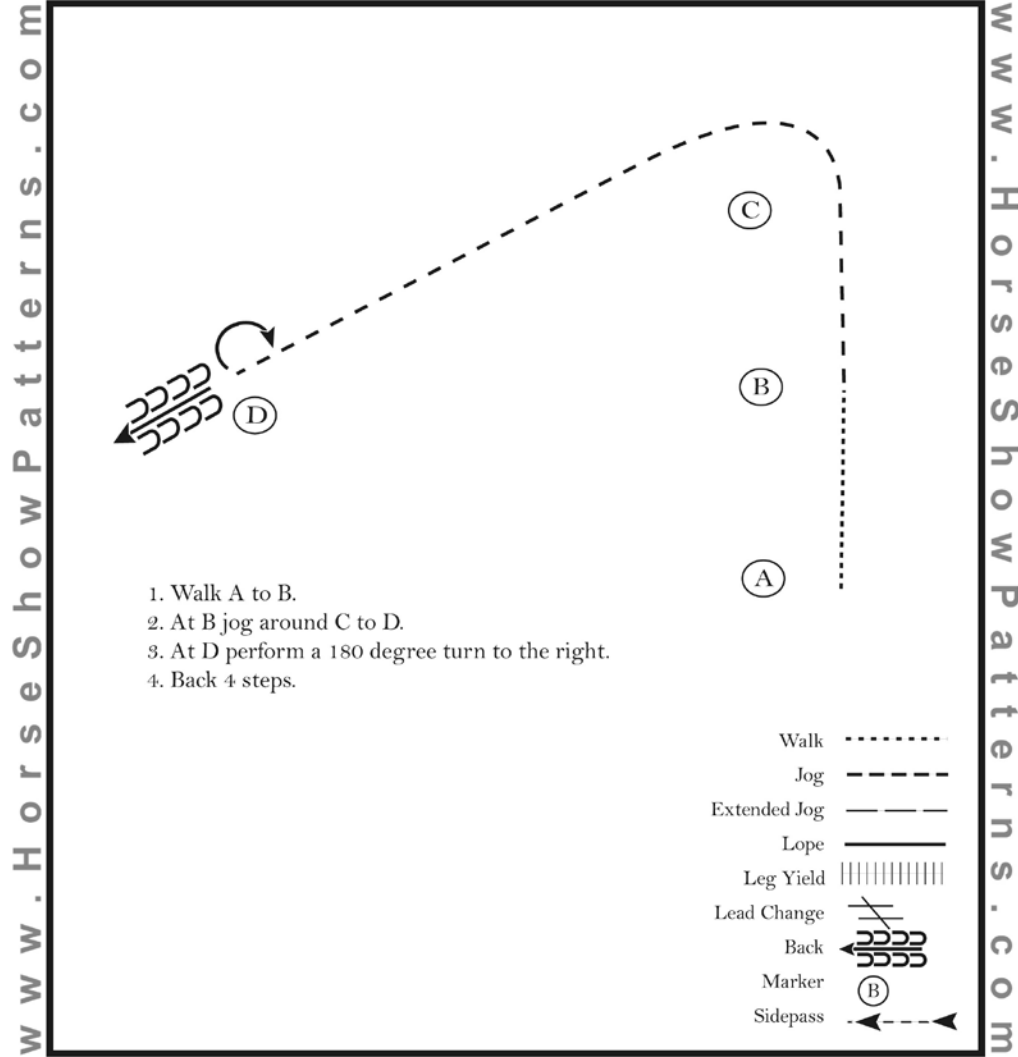
**Das Auto.**



# WRAL/FLSE BEGINNER SHOW 2016

## 17/ 2405 Horsemanship Walk Trot (Beginner )

Show Date: 04-10-2016



[WH/WT-10]

Pattern Provided by:

**WRAL**

©2016 HorseShowPatterns.com. All Rights Reserved.

# EIFEL PferdeZAHNFEE

Equine Dentist Sabine Pauly

Pferdezahnbehandlungen

Telefon: 0171-8092541 • Deudesfeld

[www.eifel-pferdezahnfee.de](http://www.eifel-pferdezahnfee.de)

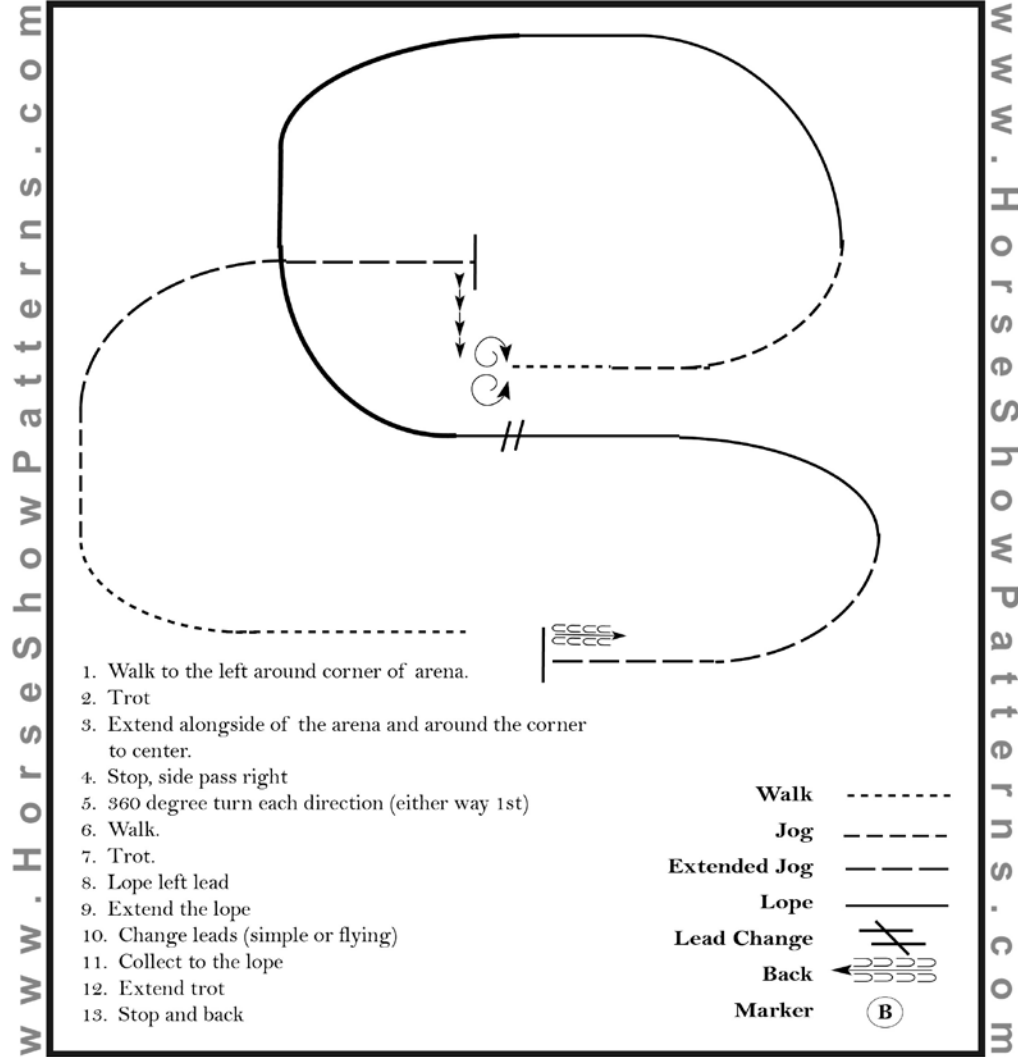
# LAVAZZA

# WRAL/FLSE BEGINNER SHOW 2016

19/ 4302 Ranch Riding (Beginner)

20/ 4301 Ranch Riding (Amateur)

Show Date: 04-10-2016



Pattern Provided by:

**WRAL**

©2016 HorseShowPatterns.com. All Rights Reserved.

# HICKORY MOONSHINE

Ein Decksprung für die bestplatzierte Stute in der Amateur Reining/Ranch Riding im Circuit 2016



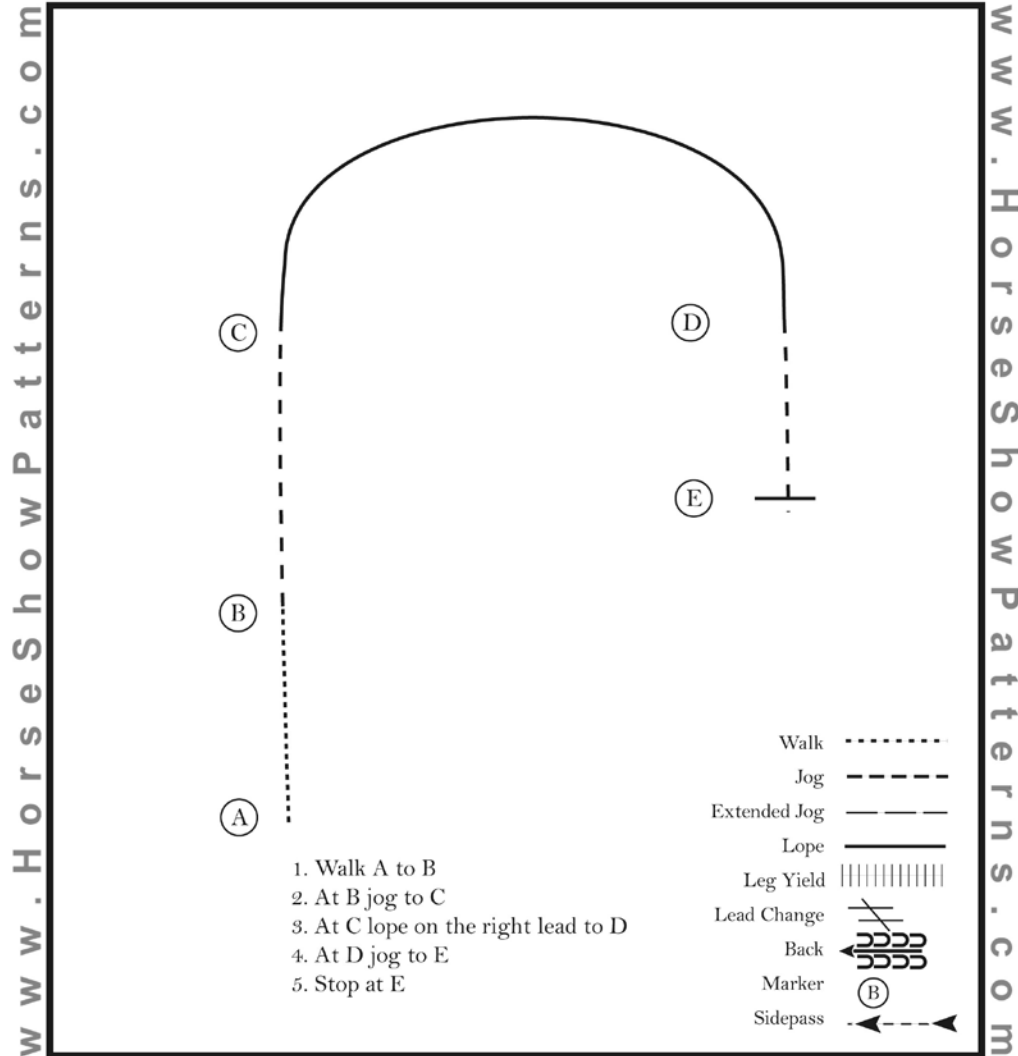
**EQU** POWERED BY  
**VENUE**  
 WWW.EQUIVENUE.COM

**HANSERHOF-NEWEL.DE**

# WRAL/FLSE BEGINNER SHOW 2016

23/ 2402 Western Horsemanship (Beginner)

Show Date: 04-10-2016



1. Walk A to B
2. At B jog to C
3. At C lope on the right lead to D
4. At D jog to E
5. Stop at E

[WH/1-28]

Pattern Provided by:

**WRAL**

©2016 HorseShowPatterns.com. All Rights Reserved.



**EQUIVA Mersch - Reitsportgeschäft**

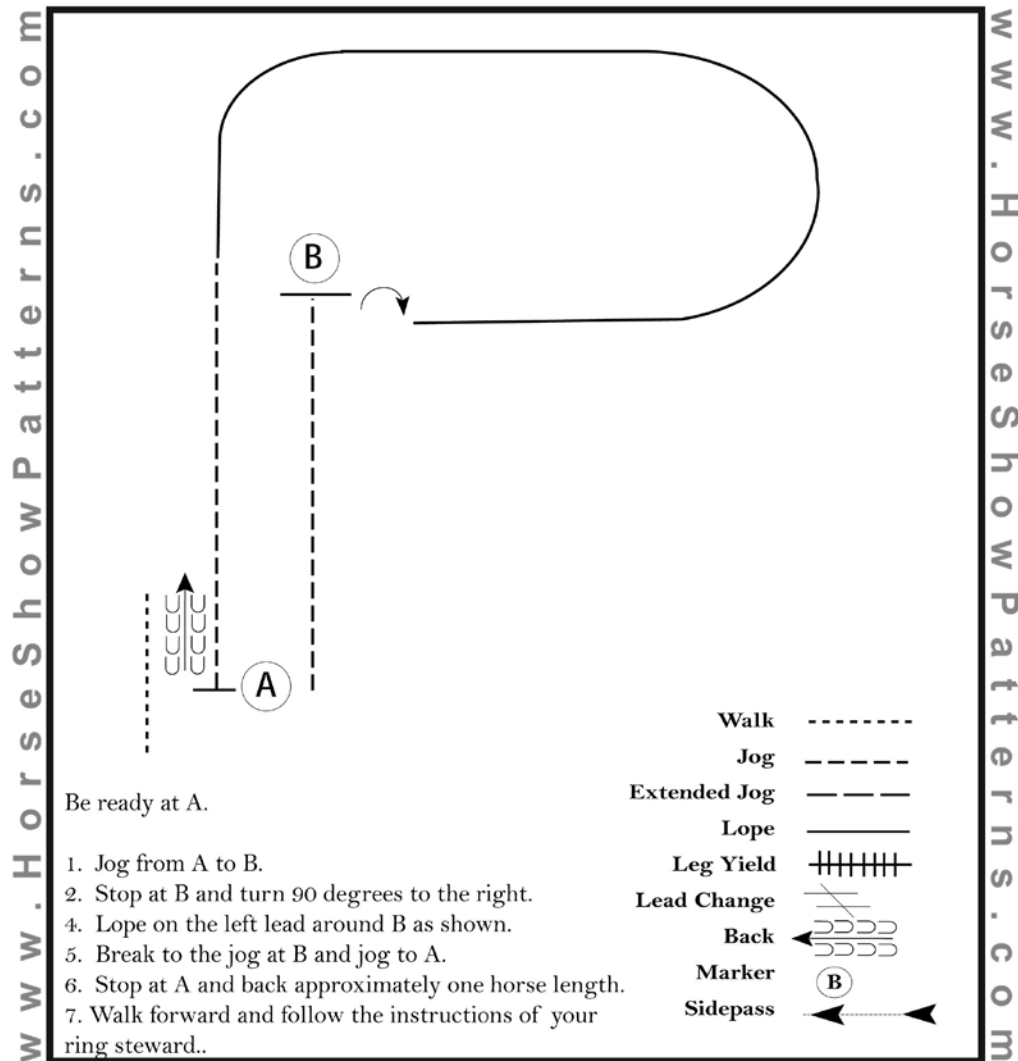
9 Um Mierscherberg - 7526 Mersch - Luxemburg - Telefon:+352 26 32 18 27  
 Öffnungszeiten: Montag - Freitag 9.00 - 20.00 Uhr, Samstag 9.00 - 19.00 Uhr



# WRAL/FLSE BEGINNER SHOW 2016

24/ 2401 Western Horsemanship (Amateur)

Show Date: 04-10-2016



[WH/1-53]

Pattern Provided by:

**WRAL**



## RAUMVERGNÜGEN.

Das Auge wohnt mit.  
Gönnen Sie sich frische,  
schöne Aussichten mit  
unserem kreativen  
Raumprogramm.

Rufen Sie uns an!

**Peinture Phillipps Sàrl**

7, rue de Godbrange

L-6118 Junglinster

Tel.: 00352 / 42 64 95

3, rue de la Déportation

L-1415 Luxembourg Hollerich

Tel.: 00352 / 42 64 95-40

### RAUMPROGRAMM.

- klassische Maler- und Lackiererarbeiten
- hochwertige dekorative Gestaltungstechniken
- Bodenbeläge
- Spanndecken
- Elektroarbeiten
- 100 % Service – bis hin zum Aus-/Einräumen und zur Profi-Bauschlussreinigung

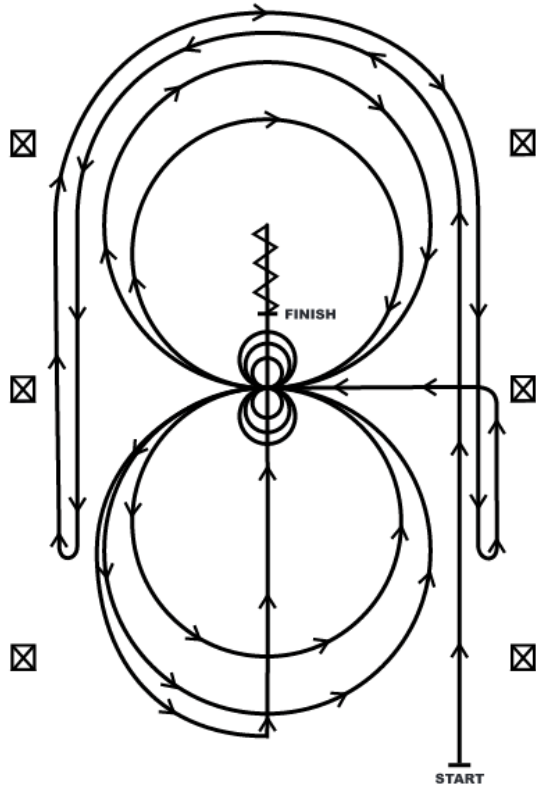
info@phillipps.lu

www.phillipps.lu





## 29/ 3402 Reining AA (Beginner)



1. Beginning, lope straight up the right side of the arena, circle the top of the arena run straight down the opposite or left side of the arena past the center mark and do a right rollback—no hesitation.

2. Continue straight up the left side of the arena circle back around the top of the arena run straight down the right side of the arena past the center marker and do a left rollback—no hesitation.

3. Continue up the right side of the arena to the center marker, at the center marker the horse should be on the left lead and complete two circles to the left, one large fast and one small slow. Stop at center

4. Complete three spins to the left. Hesitate.

5. Complete two circles to the right, one large fast and one small slow. Stop at center.

6. Complete three spins to the right. Hesitate.

7. Begin a large circle to the left, do not close the circle. Continue up the center of the arena past the center marker and do a sliding stop.

8. Back up at least ten feet. Hesitate to demonstrate completion of the pattern.



*„Eine saubere Verarbeitung, optimale Passgenauigkeit und die Liebe zum Detail sind die Grundlagen für einen perfekten Sattel.“* Moritz Stegmann



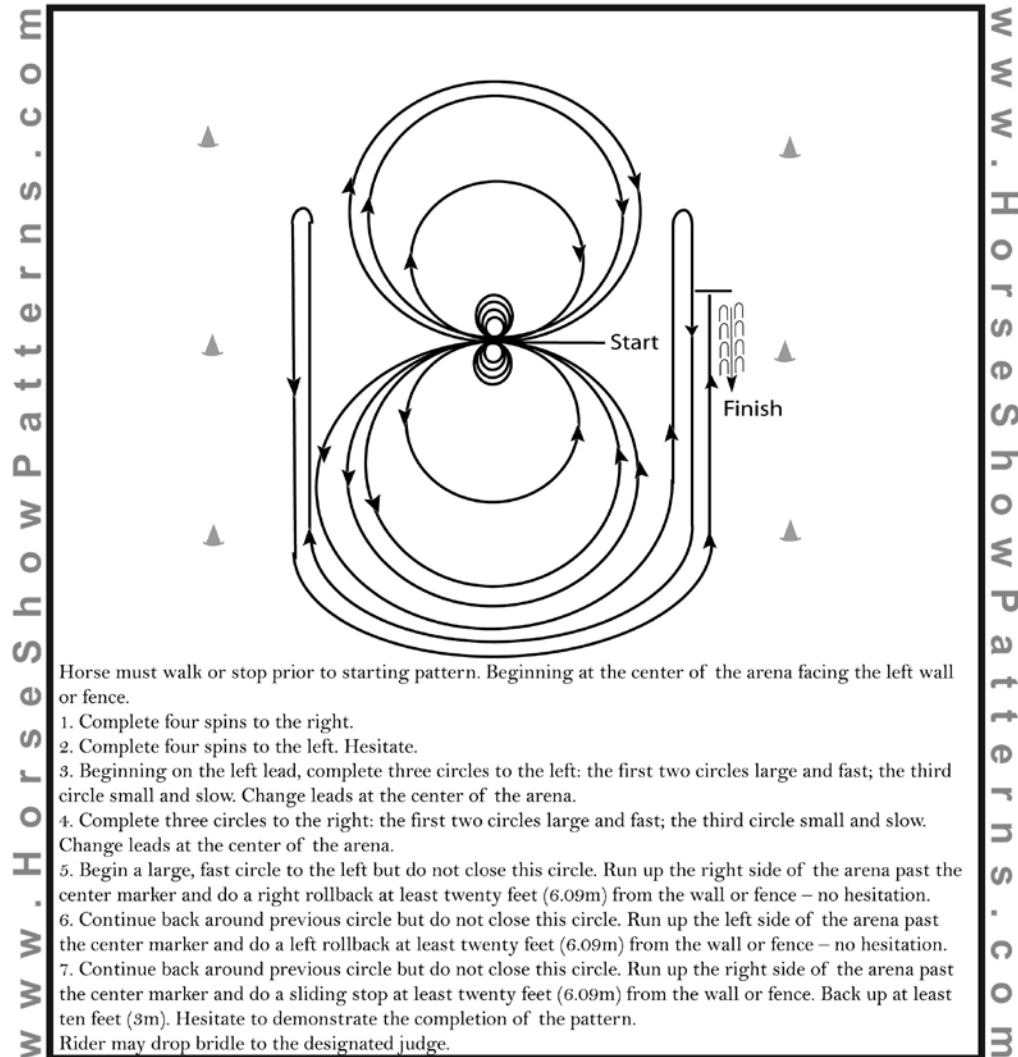
**STEGMANN**  
saddlery

Carl-Zeiss-Straße 2a | 63785 Obernburg  
Telefon: 06022-2086190 | Telefax: 06022-2086191  
[www.stegmann-saddlery.de](http://www.stegmann-saddlery.de)

# WRAL/FLSE BEGINNER SHOW 2016

- 30/ Reining AA (Amateur)
- 31/ FLSE - WRAL Reining (Youth)
- 32/ FLSE- WRAL Reining AA (Open)

Show Date: 04-10-2016



[R/AQHAP-6]

Pattern Provided by:

**WRAL**

©2016 HorseShowPatterns.com. All Rights Reserved.

**lalux**  
ASSURANCES

Votre cheval

en de bonnes mains



LALUX est une marque du Groupe LA LUXEMBOURGEOISE

## Responsabilité Civile, Frais Opératoires, Vie Animaux, Accidents

L'Assurance pour Chevaux vous protège contre des pertes financières considérables en cas d'aléa. Nous vous proposons en collaboration avec R+V (VTV) une formule de sécurité exclusive et complète au Luxembourg. N'hésitez pas à demander une offre personnalisée auprès de votre agent ou contactez directement notre service clientèle au téléphone: 4761-1.

lalux - meng Versécherung

LA LUXEMBOURGEOISE · 9, rue Jean Fischbach · L-3372 Leudelange · Tél. : 4761-1 · groupeLL@lalux.lu · www.lalux.lu



**FordStore**



**COLLE**

[www.colle.lu](http://www.colle.lu)  
[dealer@colle.lu](mailto:dealer@colle.lu)



**Votre FordStore  
au Sud du pays:  
distributeur Ford,  
Ford Focus RS,  
Ford MUSTANG  
et Ford VIGNALE.**



📍 **Route de Bascharage  
L-4513 Differdange**

☎ **+352 58 48 42 - 1  
+352 58 48 60**

