



**Leveling Program**  
**SM Workshop**  
**1.19.13**

---

---

---

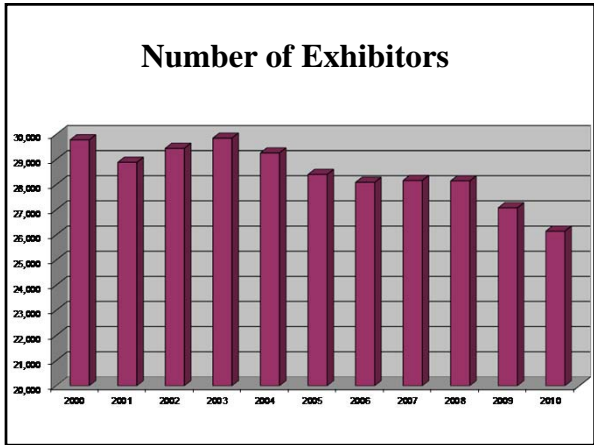
---

---

---

---

---



---

---

---

---

---

---

---

---



**Why a Leveling Program**

- Increase participation at AQHA approved shows
- Have more people recognized
- Reinvigorate our product
- Expand our customer base
- Do a better job of meeting the needs of our existing and future customers, adjusting the competition structure to meet everyone's needs

---

---

---

---

---

---

---

---



**OUR GOALS**

- Level playing field
- Ensure that horses and exhibitors of similar abilities compete together
- Protect open level exhibitor and horse

---

---

---

---

---

---

---

---



**OUR GOALS**

- Ensure the entry level are not taken advantage of, or discriminated against
- Recognize the accomplishments of exhibitors regardless of level

---

---

---

---

---

---

---

---

**Blue Ribbon Task Force**

Jack Brizendine	Jan Bruner	AQHA EC MEMBER:
Suzy Jeane	Becky Kinney	Johne Dobbs
Gale Little	Norm Luba	
Shawn Magee	Nancy Martin	AQHA STAFF:
Tom McBeath	Jeff Mellott	Melynda Ackley
Scott Neuman	John Pipkin	Patti Carter-Pratt
Sam Rose	Bennie Sargent	Charlie Hemphill
Stephen Stephens	Sherrí Tearney	Tom Persechino
Lance Treptow	Laurel Wachtel	Alex Ross
J.D. Yates	Melissa Zanetti	The Entire IT Department
Jerry Erickson		

---

---

---

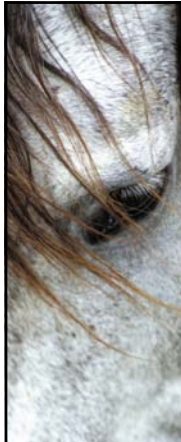
---

---

---

---

---



**Don's Elevator Speech**

AQHA recognizes the need for a stepping stone from the novice /green levels to the open , youth and amateur levels. This is why we have developed an intermediate level (term used for exhibitors) and a progressive level (term used for the horse)

---

---

---

---

---

---

---

---



**Leveled by Horse or Exhibitor?**

Leveling is done by discipline and by class

Youth and Amateur Divisions based on exhibitor

Open Division based on horse, except cattle and halter (which is based on exhibitor)

---

---

---

---

---

---

---

---



**Leveling Lingo**

<u><b>Exhibitor</b></u>	<u><b>Horse</b></u>
<b>Divisions:</b>	<b>Division:</b>
- Youth	- Open
- Amateur	
- Open	
<b>Levels:</b>	<b>Levels:</b>
- Rookie	- Rookie
- Novice	- Green
- Intermediate	- Progressive
- Open	- Open
• Cattle & Halter	• Except cattle and halter classes

---

---

---

---

---

---

---

---



**Class Breakdowns**

*Halter, Cutting, Team Penning, Ranch Sorting, Cow Horse, Roping*  
(Youth; Amateur; Select; Open)

4 levels based on exhibitor

Rookie / Novice (separate/concurrent)

Intermediate / Open (separate/concurrent)

---

---

---

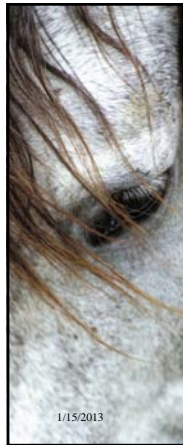
---

---

---

---

---



**Class Breakdowns**

All Youth / Amateur  
(all ages; 13- & under; 14-18; amateur & select)

Western Pleasure, Hunter Under Saddle, Pleasure Driving (amateur and select), Trail, Western Riding, Reining, Hunter Hack, Working Hunter, Jumping Horsemanship, Showmanship, Equitation, Equitation Over Fences

4 levels based on exhibitor

Rookie }  
Novice } Shown separate or concurrent

Intermediate }  
Youth/Amateur } Shown separate or concurrent

1/15/2013

---

---

---

---

---

---

---

---



**Class Breakdowns**

All remaining Open classes  
(all ages; Jr & Sr)

Western Pleasure, Hunter Under Saddle, Pleasure Driving, Trail, Western Riding, Reining, Hunter Hack, Working Hunter, Jumping

4 levels based on horse

Rookie }  
Green } Shown separately or concurrently

Progressive }  
Open } Shown separately or concurrently

---

---

---

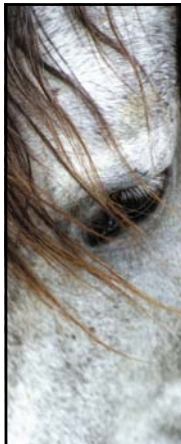
---

---

---

---

---



**Class Breakdowns**  
*Barrels, Poles, Stake Race*  
 Based on horse  
 1D, 2D, 3D or 4D Format

0-9 Entries = 1D	20-29 Entries = 3D
10-19 Entries = 2D	30+ Entries = 4D

Divisions are determined by time brackets:  
 1<sup>st</sup> division – fastest time in class  
 2<sup>nd</sup> division – fastest time in class + ½ second  
 3<sup>rd</sup> division – fastest time in class + 1 second  
 4<sup>th</sup> division – fastest time in class + 2 seconds

Example:  
 15.000 sec. – 15.499 sec. = 1D  
 15.500 sec. – 15.999 sec. = 2D  
 16.000 sec. – 16.999 sec. = 3D  
 17.000 sec. – rest of runs = 4D

---

---

---

---

---

---

---

---

---

---

---

---



**International Leveling**

- Similar countries will be grouped to determine levels
- Staff to work with International Council to determine country groupings (i.e. Germany and Italy could be grouped, Oceana and others could be grouped, etc.)

---

---

---

---

---

---

---

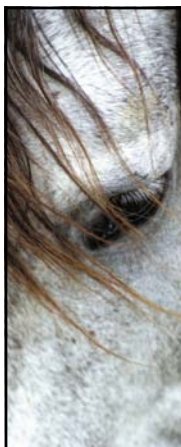
---

---

---

---

---



**Determining Point Ranges in Levels**

- An objective handicapping system which assigns exhibitors and horses to competition levels based upon their cumulative show record over the previous three years.
- Commonly used statistical measurements are applied to point earning horses and/or exhibitors

---

---

---

---

---

---

---

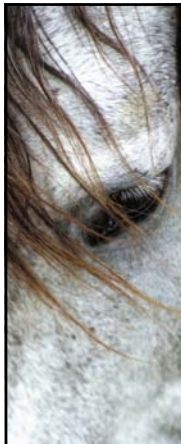
---

---

---

---

---



**System for point Breakdown**

Definitions:

Mean = the average

A Standard Deviation = a commonly used statistic that identifies naturally occurring breaks in list of numbers, like a list of AQHA point earners in a particular class

---

---

---

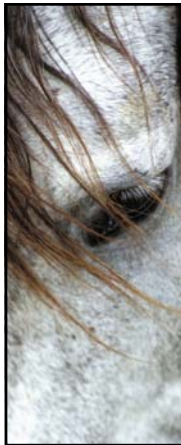
---

---

---

---

---



**Classes Levelled by Exhibitor**

Novice Level –Up to 25 points or the 90<sup>th</sup> percentile ,whichever is highest

Open Level - begins at the adjusted mean plus 3 standard deviations

Intermediate Level -1/2 point higher than the Novice, ½ point lower than the Open Level

---

---

---

---

---

---

---

---



**Classes Levelled by Horse**

Green Level-Up to 25 points

Open Level – begins at the adjusted mean plus 3 standard deviations

Progressive Level- 25.5 points to ½ point lower than the Open Level

---

---

---

---

---

---

---

---



**Levels**

Based on the previous  
3 year total points  
within the class

Horse or Exhibitor

Recalculated annually

---

---

---

---

---

---

---

---



**Implementation**

- Total points per class as of November 1 for the preceding 3 years (regular & novice pts) will be added together to determine new levels.
- As of December 15, 2012, the point ranges will be published for each level for the new year.

---

---

---

---

---

---

---

---



**Levels**

- Exhibitors and horses would stay in the same level all year, except for Rookie status
- Horses or exhibitors may “show up” but may not “show down”
  - Intermediate exhibitors and Progressive horses may show at the Open level, but Open exhibitors or horses may not show at the Intermediate or Progressive level

---

---

---

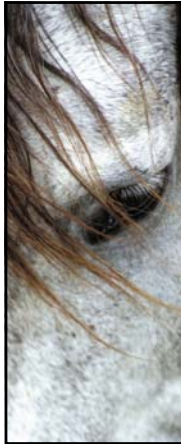
---

---

---

---

---



## Levels

**Shows will be encouraged to combine levels:**

1. Novice or Green would show as a separate class (like current Novice & Green classes). Rookie exhibitors or horses may be integrated into a combined Rookie/Novice or Rookie/Green class.
2. Intermediate or Progressive levels could show with Open levels within the Open, Youth, Amateur divisions.

---

---

---

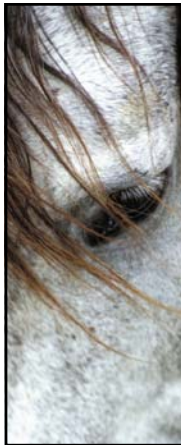
---

---

---

---

---



## Points and Placings

To ensure that the points available to Open level horses/exhibitors are not diluted, placings and points for the combined Intermediate/Progressive and Open level classes will be awarded based on the following formula:

	<u>Intermediate/ Progressive</u>	<u>Open</u>
Number of points available in the class:	Based on the number of Int. exhibitors / Prog. Horses in class	Based on <u>total</u> (Op. + Int.) number of exhibitors in class
Placings in class	Based on the number of Int. exhibitors / Prog. Horses in class	Based on <u>total</u> (Op. + Int.) number of exhibitors in class

---

---

---

---

---

---

---

---



## Points and Placings

This formula provides incentive to reach the Open level, as the class size is larger; plus, the Open exhibitors are not penalized by a smaller number of horses in a class.

If an exhibitor chooses to show in an Intermediate or Progressive level class, they will be showing against fewer horses (# of Intermediate/Progressive entries in the class); they will not have to compete against the Open level horses for points.

---

---

---

---

---

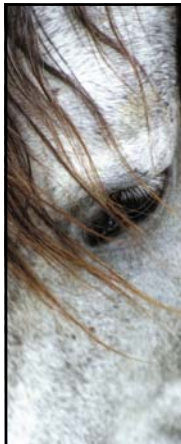
---

---

---







**Verifying Levels**

- Test drive AQHA's online leveling look-up system; in one easy step, they can check a horse's or rider's level in multiple classes.

<http://dev2.aqha.com/leveling/>

---

---

---

---

---

---

---

---



**Verifying Levels**




---

---

---

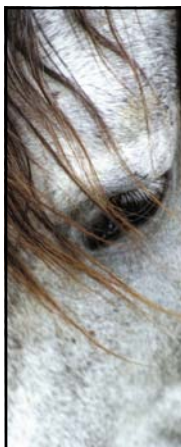
---

---

---

---

---



**Who can show in a Rookie class?**

- Based on total lifetime points
- The rookie classes will be offered in all three AQHA Divisions (Open, Amateur and Youth). To be eligible for the rookie class, the horse and the rider must each have earned fewer than ten points in that class in any division. Upon achieving 10 points in that class they will be immediately graduated out.

---

---

---

---

---

---

---

---



**Time Line**

2012

- January 1, 2012 – Rookie level implemented
- Nutrena AQHA Eastern & Smartpak AQHA Western Novice Championship Shows have been established
- World Shows will recognize Intermediate Champions (same as 2011)

---

---

---

---

---

---

---

---



**Time Line**

2013

- January 1, 2013 – Intermediate & Progressive levels will be implemented
- World shows and year-end high point awards will reflect new levels

---

---

---


---

---

---

---

---



**Member Feedback**

To all the naysayers, doubters about the leveling program wish they all could have been at the first show. Congratulations on leveling the playing field, Great job. The reviews on face book, twitter are great, as well my phone ringing from people who doubted and had concerns that talked to me last year. I simply asked to give it a chance it will work, over time will make your shows bigger and increase your entries most importantly keep exhibitors with A Q H A instead of going to open shows because they cannot compete. This is only the beginning. The road may get long and weary but the difference is always made by those that really care about everybody not just themselves and love what they do.

Bill Fuchs

---

---

---

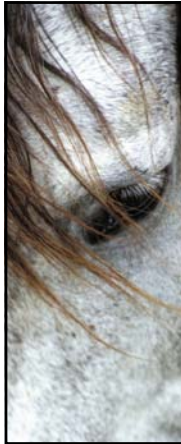
---

---

---

---

---



### Member Feedback

...we discussed the leveling program at length. I am so excited about this program!! I will be the quintessential intermediate exhibitor. I have had much success in novice and moderate success in amateur, but I am usually behind the "big names" in the placings at the big shows. I can make the finals at the big shows, but I place at the bottom of the points or at the bottom of the top ten. I made it to the world show, but my prelim score put me at 30th, when 20 returned to the semi-finals. I don't look at it in a negative way, I just don't have the resources or time to take it to the next level in terms of horse quality, practice time, or hauling time to all of the big shows. I am fine with that, and I had decided to stick to smaller, state shows and intro shows and not worry about the world show anymore. But now, I can return to the big shows and eventually to the world show as an intermediate. Yea!!!! Melinda Mayes

---

---

---

---

---

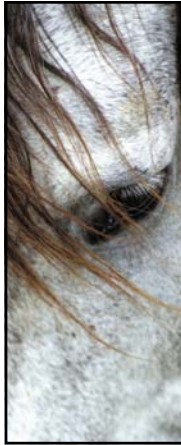
---

---

---

---

---



### Member Feedback

The first day, right away, we had a 6-year-old horse that had some health issues last year and wasn't able to be shown much as a junior horse. We were concerned that he's no longer 'green'... but where was he going to fit? He's not a senior horse that can compete against those top senior horses yet.  
"He was second in the Progressive the first day and got three points. That showed us the system will work. It will work for those horses that need a place to show. It will make our clients happy to take those horses down the road to help get them more finished, and give (our clients) something for their money, prizes and points and Incentive Fund money. We were thrilled by it...  
Jill Briggs

---

---

---

---

---

---

---

---

---

---